



海伦哲
HANDLER

Ticker Symbol: 300201

GKJH20

20m Insulated Aerial Work Platform

XUZHOU HANDLER SPECIAL VEHICLE CO.,LTD

#19 Baoliansi Road, Xuzhou Economic Development Zone,
Xuzhou city, Jiangsu province, China

Tel:+86-516-68782715 http: www.xzhlz.com

This brochure is for reference only. We reserve the right to modify the
technical parameters and components as the technology improves.



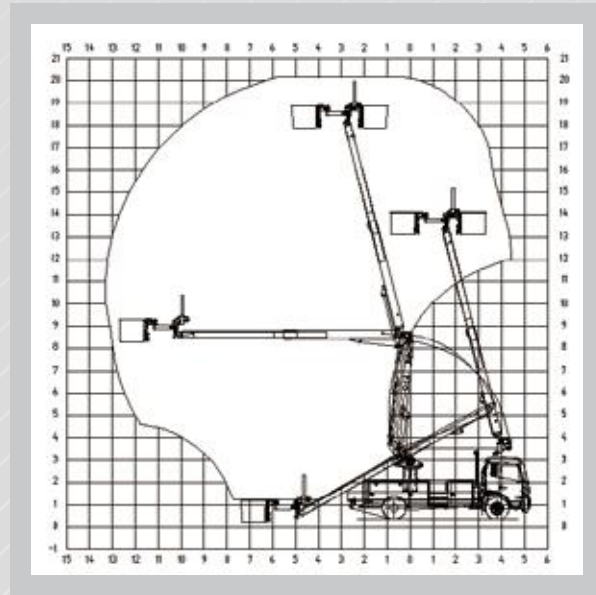
www.xzhlz.com



Main technical parameters

Working range

GKJH20 Insulated aerial work platform			
Item	Description	Unit	Data
Dimension	Total length	mm	8200
	Total width	mm	2500
	Total height	mm	3700
Weight	Cab personnel capacity		3
	Total weight	kg	13195
Main Performance	Bucket rated load capacity	kg	280
	Max. working height	m	20
	Max. working radius	m	13.3
	Bucket rotation	°	± 90
	Bucket lift height	m	0.6
	Max. lift weight	kg	460
	Rated voltage	kv	35



Main configuration



- **Insulation:** 1m insulated pre-extension + 2.5m insulated telescopic boom + 0.4m insulated lower boom + 0.4m insulated jib;
- **Leveling system:** Hydraulic leveling;
- **Operation:** Two sets of control systems for turret and bucket;
- Boom-outrigger interlock;
- Emergency electro-hydraulic pump;
- Cylinder retraction limit device;
- Emergency stop;
- Driving and taking force interlock device;